

Reliable.
Symmetrical.
Flexible.

SDSL

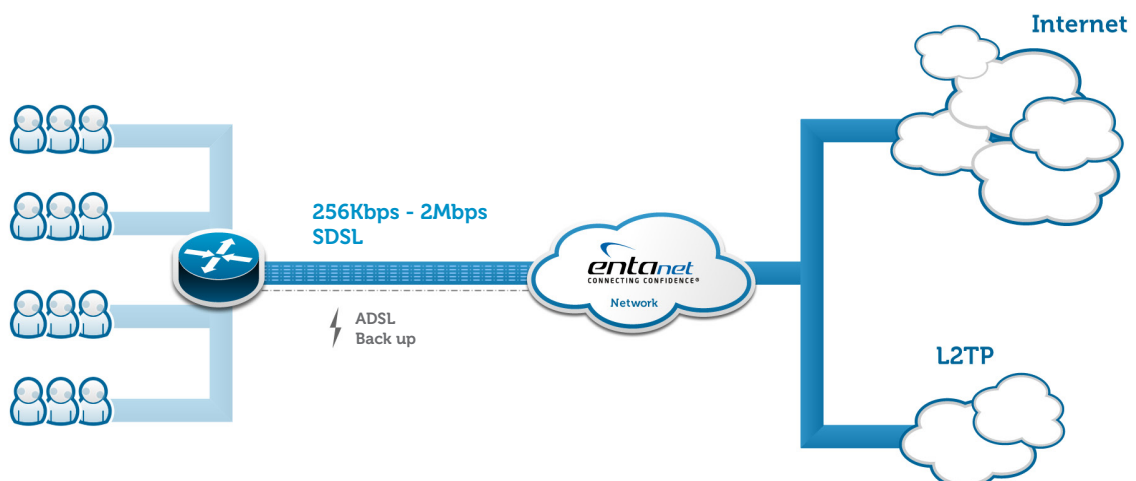
Entanet's SDSL solution presents a reliable connection for businesses looking to enjoy faster upload connectivity speeds than standard ADSL affords them, with the added benefit that symmetrical speed delivers for inter-office data transfer.

SDSL provides symmetrical upload and download speeds enabling multiple sites and remote workers to send and receive critical data without upload speed restrictions, improving business performance. This particularly suits businesses with VPN's (Virtual Private Networks) who require fast bi-directional speed without committing to a large infrastructure.

Available with speeds of 512Kbps, 1Mbps and 2Mbps, 1 free static IP address and a single monthly subscription fee, SDSL provides a reliable connectivity solution with the flexibility to upgrade further as your bandwidth requirements increase.

For our managed SDSL solution, we provide a Cisco router pre-configured for installation, rented as part of the solution and monitored continuously by our Network Operation Centre's team for complete peace of mind.

How SDSL works





Features

Available speeds to 2Mbps

Symmetric bandwidth

Managed Cisco router (managed option only)

24/7 monitoring & 24/7 helpdesk

Benefits

Choose the speed of connection that best suits your business requirements from 512Kbps, 1Mbps and 2Mbps.

Bi-directional speed for faster inter-office data transfer.

The more lines bonded together, the more resilient and faster the connection is. Continuous management by Entanet ensures any faults are detected and dealt with swiftly.

Continuously monitored and supported to ensure consistency of service and immediate action where necessary.

Why SDSL?

For those organisations requiring bi-directional speeds, perhaps for sending and receiving data between multiple offices or home workers throughout the UK, SDSL provides symmetrical speeds up to 2Mbps.

Organisations often reach a point in their growth when standard ADSL broadband connections no

longer effectively support the data communication requirements between their principal and regional offices and remote workers. The demands of their day-to-day operations create the need for reliable bi-directional speed so that users accessing data from central servers are not restricted by upload speed of the connection.